

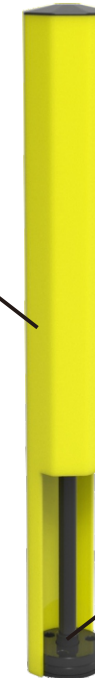
Macromolecular flexible anti - collision column



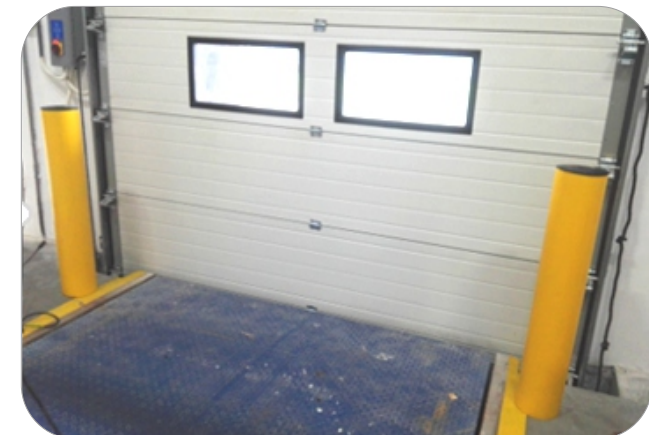
Impeller type high elastic load wheel deformation absorbs energy and transfer residual energy to high strength elastic core.

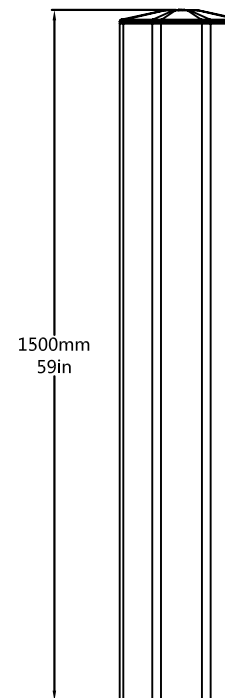
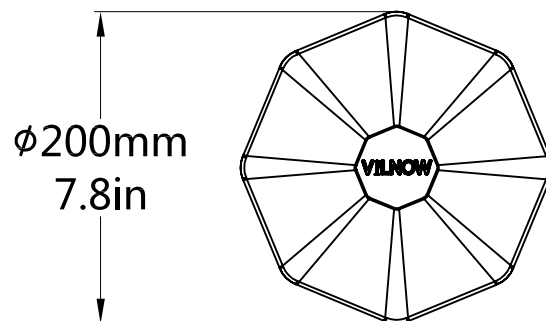
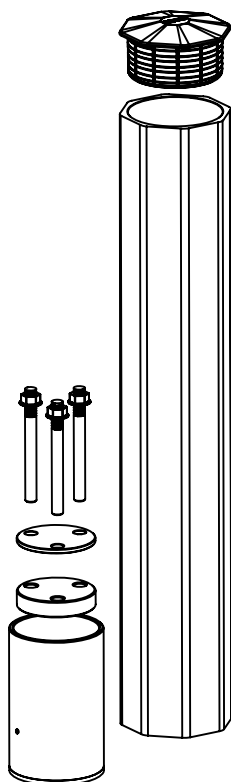


The housing deflects the impact force. The post is made of macromolecular elastic material. It absorbs the energy of impact effectively and the energy transfer to core buffered.



The bottom of the inner core is equipped with elastic buffer. It reduces the force of anchor bolts to the ground and protects the concrete floor from damage





Macromolecular flexible anti-collision column applies to the environment which prones to happen risk of collision. Such as door, passage, corner and machine side. The whole body is yellow and it is highly visible in the environment.

Features

- 1、Macromolecular Material. High Performance.
- 2、Immediately recover from impact.
- 3、Easy to install.



Scan to watch crash test video

| Model | Extra-column diameter | In-column diameter | Standard Height (Can be customized according to needs) | Anti-collision performance |
|---------------|-----------------------|--------------------|--|--|
| VN-PSS-100*20 | 180MM | 160MM | 1000MM | It can withstand up to 4 tons of forklift impact at 6Km/H. |
| VN-PSS-50*20 | 180MM | 160MM | 500MM | It can withstand up to 4 tons of forklift impact at 6Km/H. |